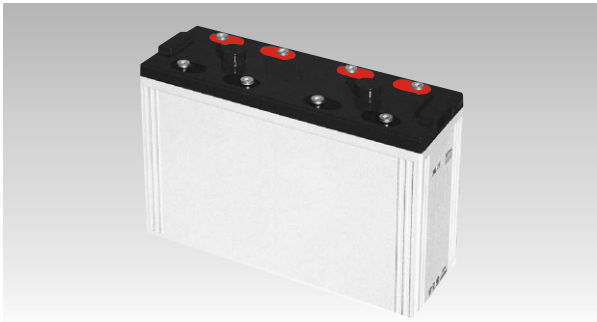
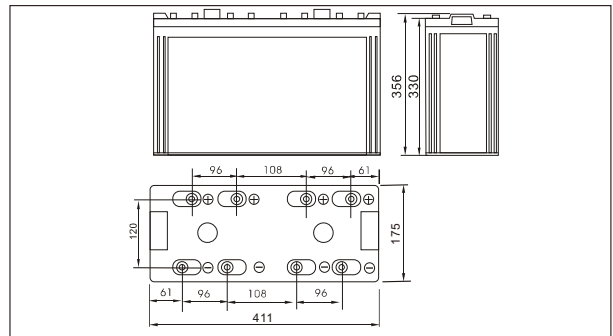




SW28000E(2V800AH)



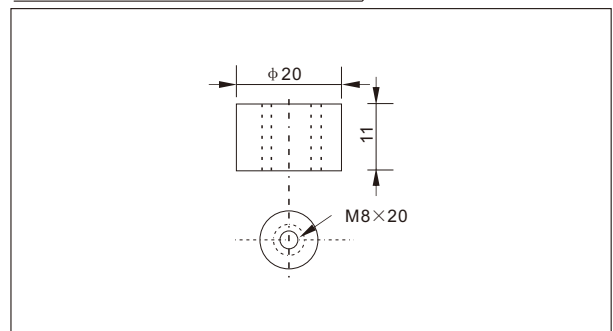
Outer dimensions (mm)



Specifications

Nominal Voltage	2 V	
Rated capacity (10 hour rate)	800 Ah	
Dimensions	Total Height	356mm (14.0 inches)
	Height	330mm (13.0 inches)
	Length	411mm (16.2 inches)
	Width	175mm (6.89 inches)
Weight Approx	50.0 Kg (110.1 lbs)	

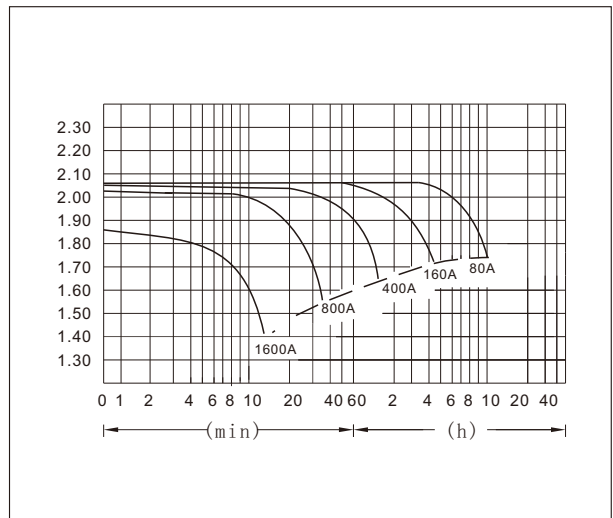
Terminal Type (mm)



Characteristics

Capacity 25°C(77°F)	10 hour rate(80 A)	800 AH
	5 hour rate(128A)	640 AH
	1 hour rate(480 A)	480 AH
	1.5 hour discharge to 1.75 V	320 A
Internal Resistance	Full charged Battery at 25°C(77°F)	0.7 mΩ
Capacity affected by Temperature (10hour rate)	40°C(104°F)	102%
	25°C(77°F)	100%
	0°C(32°F)	85%
	-15°C(5°F)	65%
Self-Discharge at 25°C(77°F)	Capacity after 3 month storage	91%
	Capacity after 6 month storage	82%
	Capacity after 12 month storage	64%
Terminal	T20	
Charge (constant Voltage)	Cycle	Initial Charging Current less than 200 A Voltage 2.35-2.40V
	Float	Voltage 2.25-2.30V

Discharge Curves 25°C(77°F)



Constant Current(Amp) and Constant Power(Watt) Discharge Table at 25°C(77°F)

Time		10min	30min	1h	2h	3h	4h	5h	8h	10h	20h
1.60V	A	1592.0	912.0	480.0	280.0	206.4	160.0	134.73	92.7	88.0	45.6
	W	3128	1632	928	544	400	312.0	256.0	176.0	164.0	87.1
1.70V	A	1512.0	888.0	451.2	267.2	200.0	156.0	132.1	91.0	82.8	44.8
	W	3008	1616	872	512	384	304.0	248.0	176.0	156.0	85.6
1.75V	A	1432.0	816.0	440.0	260.8	195.2	153.6	130.9	90.0	81.6	44.2
	W	2912	1520	840	504	376	296.0	244.8	173.6	154.4	84.0
1.80V	A	1352.0	752.0	424.0	254.4	190.4	151.2	123.2	87.7	80.0	43.7
	W	2800	1464	808	496	368	289.6	240.0	168.0	153.6	83.2
1.85V	A	1272.0	672.0	400.0	248.0	184.0	146.7	120.8	85.3	78.0	43.2
	W	2640	1344	784	488	368	284.0	238.4	160.8	152.0	82.0