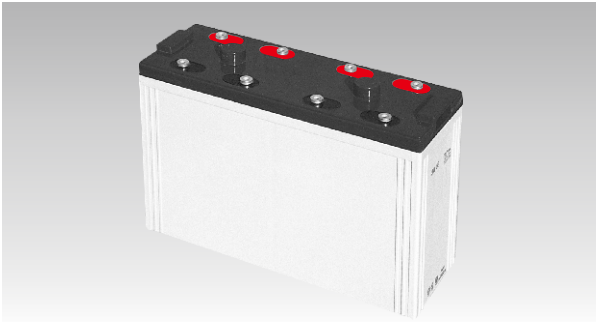
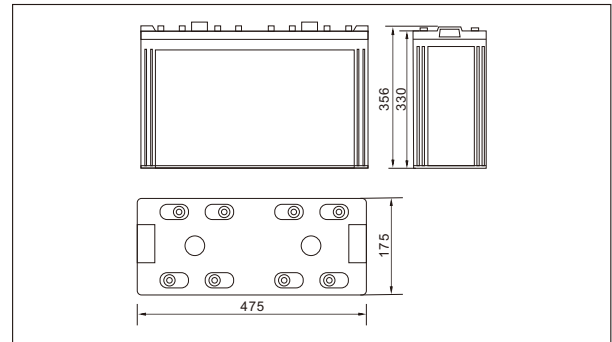




SW210000E(2V1000AH)



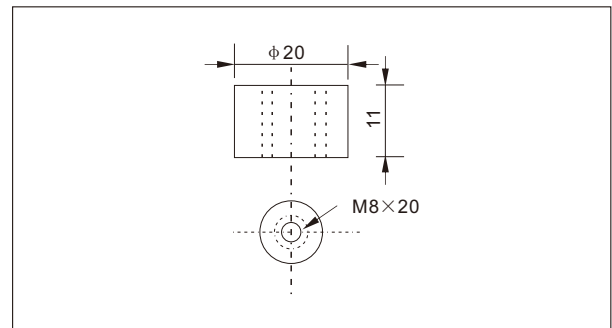
Outer dimensions (mm)



Specifications

Nominal Voltage		2 V
Rated capacity (10 hour rate)		1000 Ah
Dimensions	Total Height	356 mm (14.02 inches)
	Height	330 mm (12.99 inches)
	Length	475 mm (18.7 inches)
	Width	175 mm (6.89 inches)
Weight Approx		61.5 Kg (135.5 lbs)

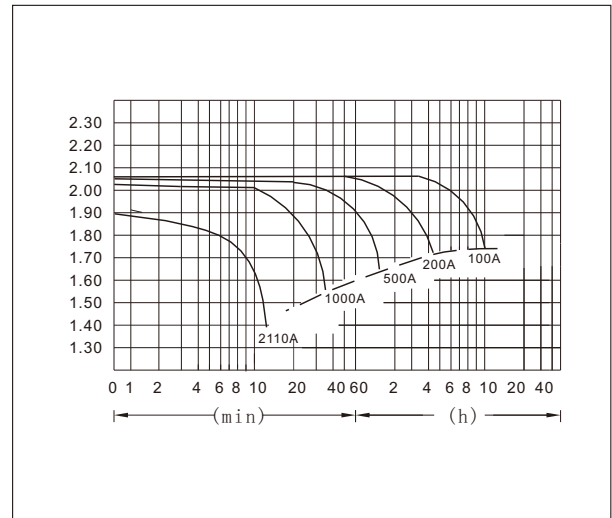
Terminal Type (mm)



Characteristics

Capacity 25°C(77°F)	10 hour rate(100 A)	1000 AH
	5 hour rate(160A)	800 AH
	1 hour rate(600 A)	600 AH
	1.5 hour discharge to 1.75 V	400 A
Internal Resistance	Full charged Battery at 25°C(77°F)	0.2 mΩ
Capacity affected by Temperature (10hour rate)	40°C(104°F)	102%
	25°C(77°F)	100%
	0°C(32°F)	85%
	-15°C(5°F)	65%
Self-Discharge at 25°C(77°F)	Capacity after 3 month storage	91%
	Capacity after 6 month storage	82%
	Capacity after 12 month storage	64%
Terminal	T20	
Charge (constant Voltage)	Cycle	Initial Charging Current less than 400 A Voltage 2.35-2.40V
	Float	Voltage 2.25-2.30V

Discharge Curves 25°C(77°F)



Constant Current(Amp) and Constant Power(Watt) Discharge Table at 25°C(77°F)

Time		10min	30min	1h	2h	3h	4h	5h	8h	10h	20h
1.60V	A	2110	1140	600	350	257.0	200.0	165.0	116.3	112.0	57.00
	W	3905	2036	1158	676	496	386	318	224	203	109.4
1.70V	A	1900	1110	564.0	334.0	250.0	195.0	162.0	113.8	105.0	56.70
	W	3756	2017	1089	645	483	376	313	220	198	106.7
1.75V	A	1600	1020	546	326.0	244.0	192.0	160.0	113.0	102.4	55.30
	W	3640	1903	1054	629	471	371	309	218	195	105.4
1.80V	A	1600	940	528	318.0	238.0	189.0	156.0	110.0	100.0	54.60
	W	3498	1832	1008	617	462	363	303	213	194	104.8
1.85V	A	1500	840	497	310.0	230.0	183.3	152.0	107.0	97.50	54.00
	W	3438	1817	981	615	456	361	301	212	188	101.7