



4OPzV200(2V200AH)



Features

- Excellent high temperature performance;
- Excellent cycling performance;
- High strength ABS material;
- Plates: large capacity and thick plate structure design;
- Separator: glass fiber with high adsorption and high stability;

Applications

- High temperature environment(35-70°C) ;
- Telecom&UPS;
- Solar and energy systems.

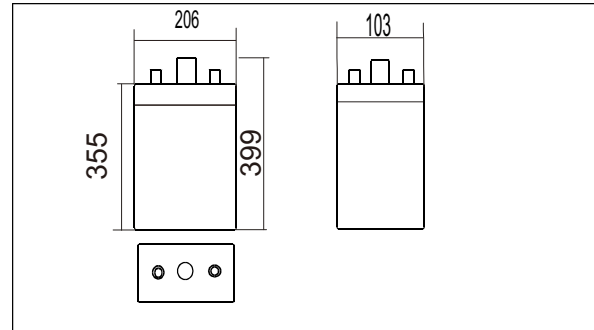
International standards

- GB/T 22473 - 2008;
- JIS C8704-1 : 2006 ;
- IEC 60896-21/22: 2004 ;
- Passed ISO9001, ISO14001,
- OHSAS18001, UL, CE, CGC.

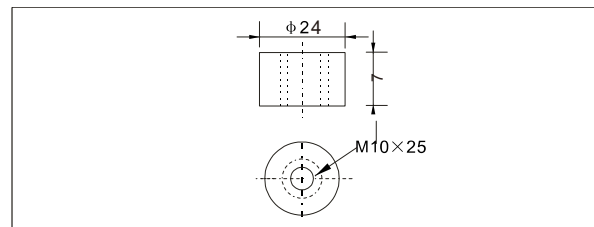
Specifications

Nominal Voltage		2V
Rated capacity(10 hour rate)		200Ah
Dimensions	Total Height	399mm(15.7inches)
	Height	355mm(14.0inches)
	Length	103mm(4.1 inches)
	Width	206mm(8.11 inches)
Weight approx		17.5 kg (38.5 lbs)

Outer dimensions (mm)



Terminal Type (mm)



Characteristics

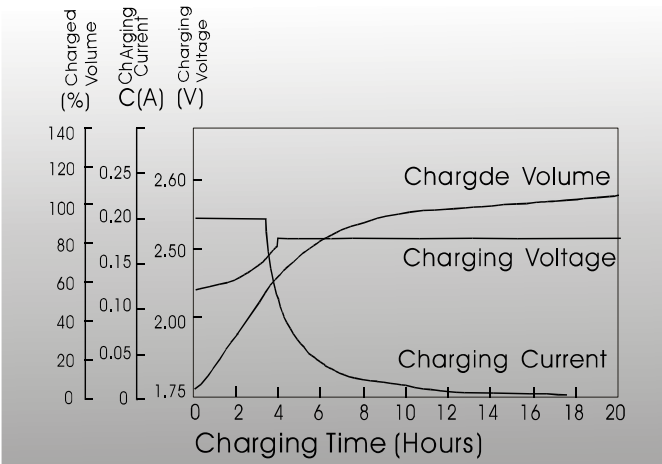
Capacity 25°C(77°F)	10 hour rate(20.0 A) 5 hour rate(36.3A) 1 hour rate(105A)	200AH 181.5AH 105AH
Internal Resistance	Full charged Battery at 25°C(77°F)	1.05 mΩ
Capacity affected by Temperature (10hour rate)	40°C(104°F) 25°C(77°F) 0°C(32°F) -15°C(5°F)	102% 100% 85% 65%
Self-Discharge at 25°C(77°F)	Capacity after 3 month storage Capacity after 6 month storage Capacity after 12 month storage	91% 82% 64%
Terminal quantity	2	
Charge (constant Voltage)	Initial Charging Current less than 50 A Voltage 2.25-2.40V	
Design Life	20 Year	

Constant Current(Amp) and Constant Power(Watt) Discharge Table at 25°C (72°F)

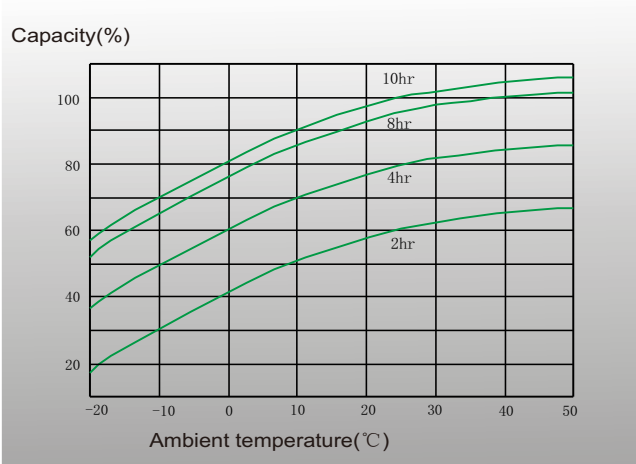
Time		30min	1hr	2hr	3hr	5hr	6hr	8hr	10hr	20hr	24hr	48hr	100hr
1.65V	A	174.0	115.0	75.3	59.0	40.7	32.9	26.7	23.3	12.0	10.0	5.3	2.6
	W	365	235	168	118	76	73	60	45	23	20	14	7
1.70V	A	169.0	110.0	71.0	55.7	38.3	31.1	25.6	22.0	11.8	9.9	5.3	2.6
	W	343	228	165	114	75	71	58	44	22	20	13	7
1.75V	A	160.0	105.0	67.0	53.0	36.3	29.6	24.4	21.0	11.4	9.9	5.2	2.6
	W	314	222	161	110	74	69	56	42	22	20	13	7
1.80V	A	154.0	100.0	63.3	50.0	34.0	28.2	23.6	20.0	10.8	9.9	5.2	2.6
	W	279	208	157	106	72	66	54	41	22	20	13	7
1.85V	A	145.0	95.0	60.3	47.0	32.7	26.9	22.2	18.9	10.2	9.4	5.2	2.6
	W	242	203	149	101	69	63	52	39	21	19	13	7



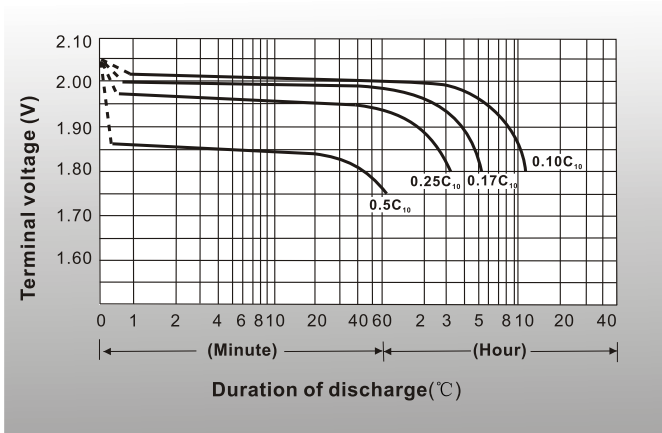
● Charging characteristics(25°C)



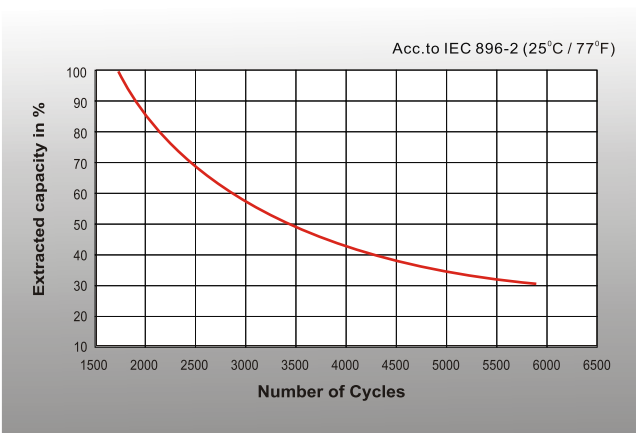
● Curves of discharge capacity and ambient temperature



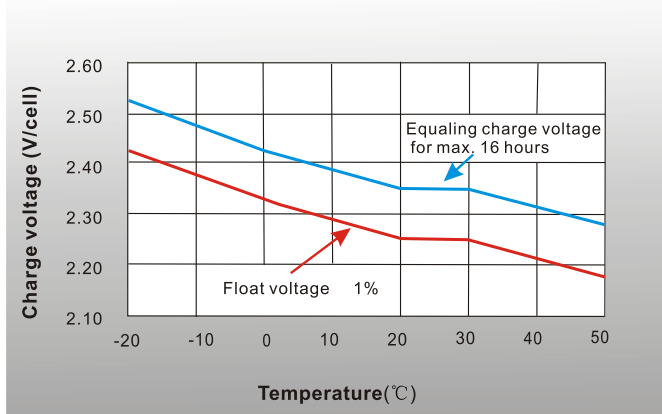
● Discharge characteristics 77° F(25°C)



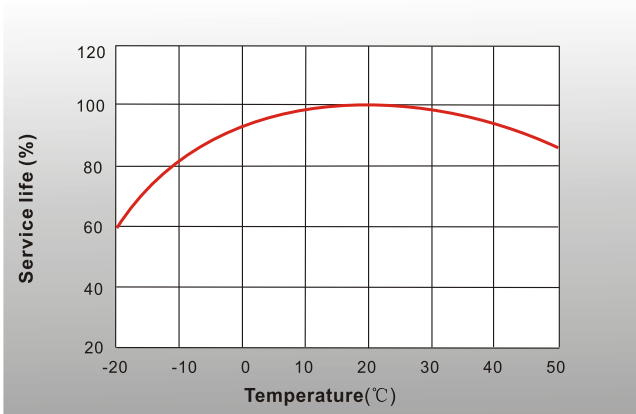
● Cycle life in relation to depth of discharge



● Charge voltage vs Ambient temperature curve



● Service life vs Ambient temperature



Shenzhen Sunnyway Battery Tech.Co.,Ltd.

Head Office: RM.A1302,NO.1 Building Tian'an Cyber Park, Longgang, Shenzhen, China
 Production Base: Nanyi Road,Dongying Economic Development Zone, Shandong, China.
 Tel:+86-755-84630145 Fax:+86-755-84630114
 Email:jerry@sunnyway-battery.com

