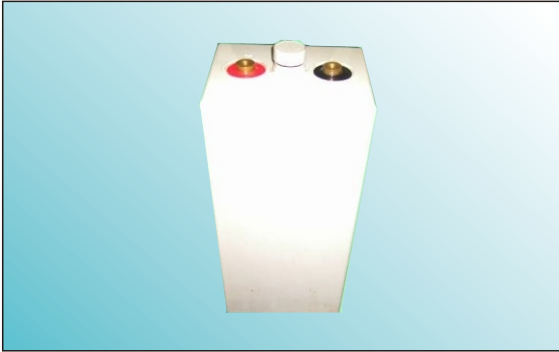




50PzV250(2V250AH)



Features

- Excellent high temperature performance;
- Excellent cycling performance;
- High strength ABS material;
- Plates: large capacity and thick plate structure design;
- Separator : glass fiber with high adsorption and high stability;

Applications

- High temperature environment(35-70°C) ;
- Telecom&UPS;
- Solar and energy systems.

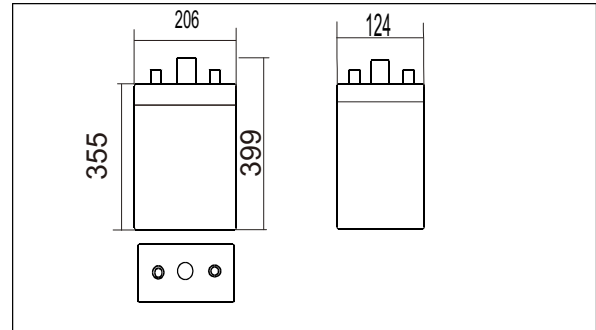
International standards

- GB/T 22473 - 2008;
- JIS C8704-1 : 2006 ;
- IEC 60896-21/22: 2004 ;
- Passed ISO9001, ISO14001,
- OHSAS18001, UL, CE, CGC.

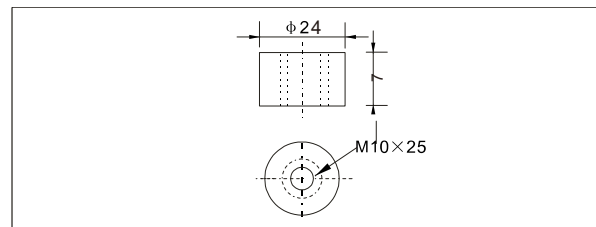
Specifications

Nominal Voltage		2V
Rated capacity(10 hour rate)		250Ah
Dimensions	Total Height	399mm(15.7inches)
	Height	355mm(14.0inches)
	Length	124mm(5.7 inches)
	Width	206mm(8.11 inches)
Weight approx		22 kg (48.4 lbs)

Outer dimensions (mm)



Terminal Type (mm)



Characteristics

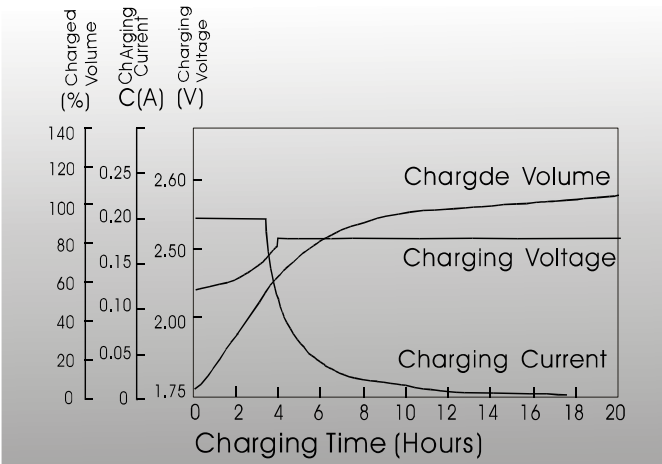
Capacity 25°C(77°F)	10 hour rate(25.0 A) 5 hour rate(45.4A) 1 hour rate(131.3A)	250AH 227AH 131.3AH
Internal Resistance	Full charged Battery at 25°C(77°F)	1.0 mΩ
Capacity affected by Temperature (10hour rate)	40°C(104°F) 25°C(77°F) 0°C(32°F) -15°C(5°F)	102% 100% 85% 65%
Self-Discharge at 25°C(77°F)	Capacity after 3 month storage Capacity after 6 month storage Capacity after 12 month storage	91% 82% 64%
Terminal quantity	2	
Charge (constant Voltage)	Initial Charging Current less than 62.5A Voltage 2.25-2.40V	
Design Life	20 Year	

Constant Current(Amp) and Constant Power(Watt) Discharge Table at 25°C (72°F)

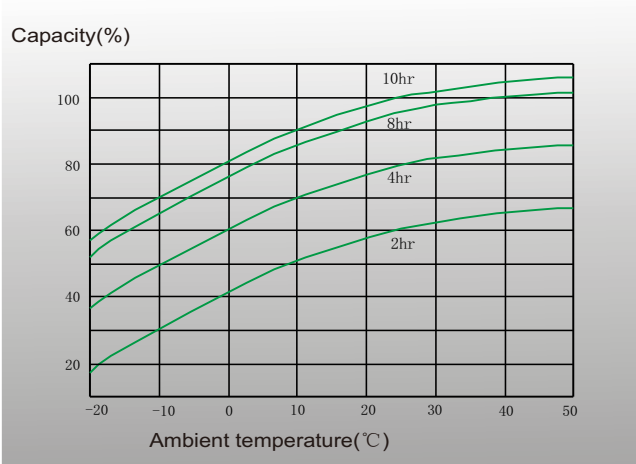
Time		30min	1hr	2hr	3hr	5hr	6hr	8hr	10hr	20hr	24hr	48hr	100hr
1.65V	A	217.5	143.8	94.2	73.8	50.8	41.1	33.3	29.2	15.0	12.5	6.7	3.3
	W	456	294	210	148	95	91	75	56	28	26	17	9
1.70V	A	211.3	137.5	88.8	69.6	47.9	38.9	32.0	27.5	14.7	12.4	6.6	3.3
	W	429	285	206	143	94	88	73	55	28	25	17	9
1.75V	A	200.0	131.3	83.8	66.3	45.4	37.0	30.5	26.3	14.3	12.4	6.5	3.3
	W	392	278	201	138	93	86	70	53	28	25	17	9
1.80V	A	192.5	125.0	79.2	62.5	42.5	35.3	29.5	25.0	13.5	12.3	6.5	3.2
	W	349	260	196	133	90	83	68	51	28	25	17	9
1.85V	A	181.3	118.8	75.4	58.8	40.8	33.6	27.8	23.6	12.8	11.8	6.5	3.2
	W	303	254	186	126	86	79	65	49	26	24	17	9



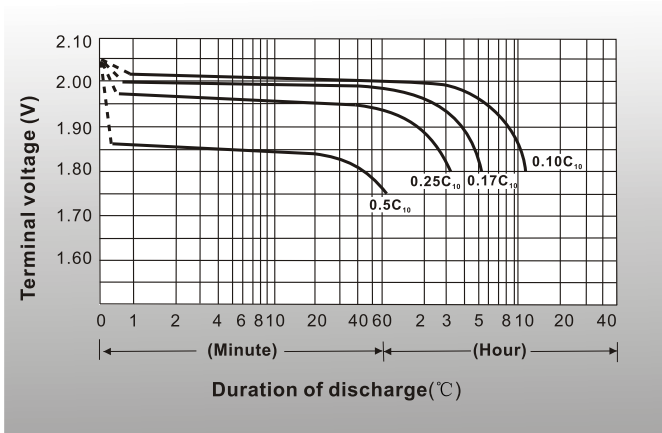
● Charging characteristics(25°C)



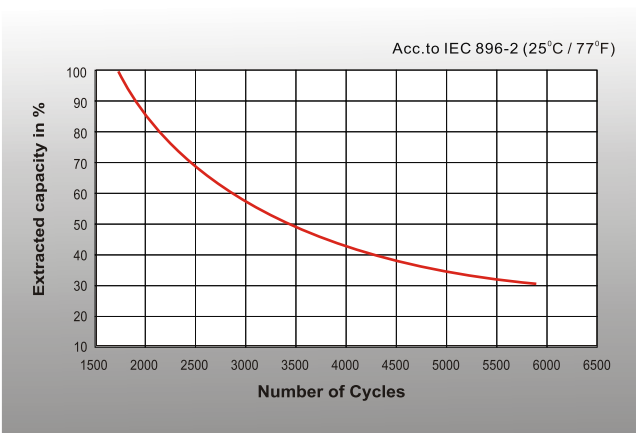
● Curves of discharge capacity and ambient temperature



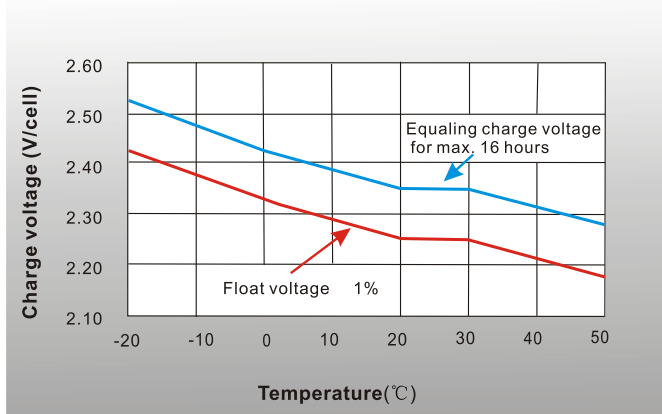
● Discharge characteristics 77° F(25°C)



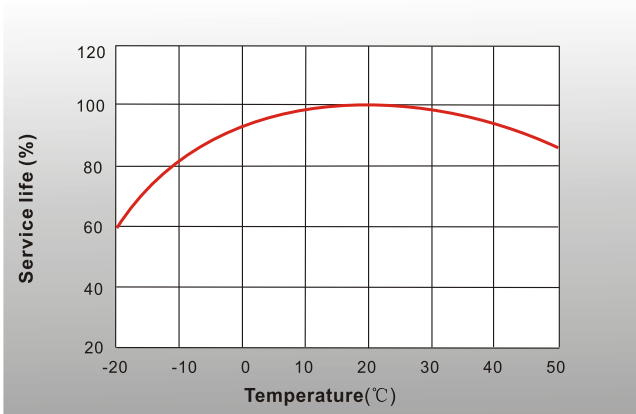
● Cycle life in relation to depth of discharge



● Charge voltage vs Ambient temperature curve



● Service life vs Ambient temperature



Shenzhen Sunnyway Battery Tech.Co.,Ltd.

Head Office: RM.A1302,NO.1 Building Tian'an Cyber Park, Longgang, Shenzhen, China
 Production Base: Nanyi Road,Dongying Economic Development Zone, Shandong, China.
 Tel:+86-755-84630145 Fax:+86-755-84630114
 Email:jerry@sunnyway-battery.com

