



6OPzV300(2V300AH)



Features

- Excellent high temperature performance;
- Excellent cycling performance;
- High strength ABS material;
- Patents: large capacity and thick plate structure design;
- Separator: glass fiber with high adsorption and high stability;

Applications

- High temperature environment (35-70°C) ;
- Telecom & UPS;
- Solar and energy systems.

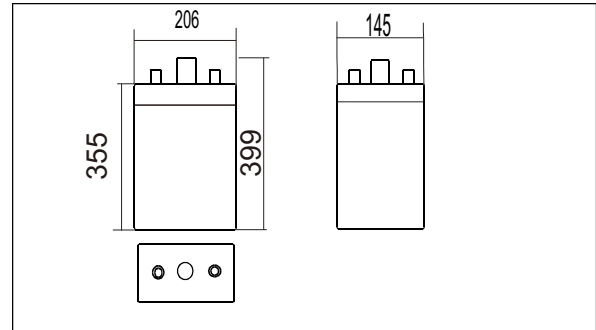
International standards

- GB/T 22473 - 2008;
- JIS C8704-1 : 2006 ;
- IEC 60896-21/22 : 2004 ;
- Passed ISO9001, ISO14001,
- OHSAS18001, UL, CE, CGC.

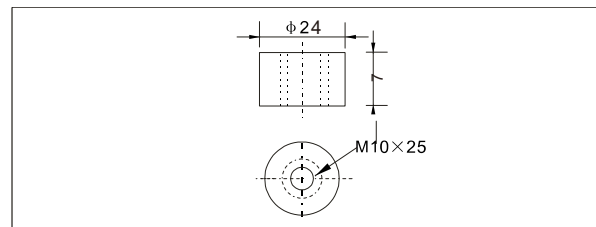
Specifications

Nominal Voltage		2V
Rated capacity (10 hour rate)		300Ah
Dimensions	Total Height	399mm (15.7 inches)
	Height	355mm (13.97 inches)
	Length	145mm (5.72 inches)
	Width	206mm (8.11 inches)
Weight approx		24.5 kg (53.9 lbs)

Outer dimensions (mm)



Terminal Type (mm)



Characteristics

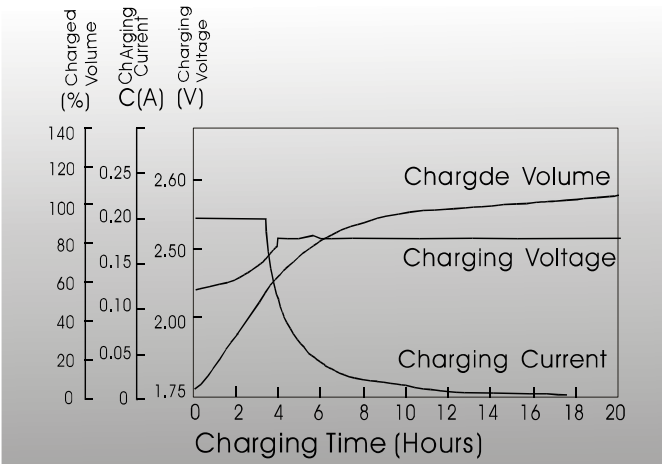
Capacity 25°C (77°F)	10 hour rate (30.0 A) 5 hour rate (54.5 A) 1 hour rate (157.5 A)	300AH 272.5AH 157.5AH
Internal Resistance	Full charged Battery at 25°C (77°F)	0.8 mΩ
Capacity affected by Temperature (10 hour rate)	40°C (104°F) 25°C (77°F) 0°C (32°F) -15°C (5°F)	102% 100% 85% 65%
Self-Discharge at 25°C (77°F)	Capacity after 3 month storage Capacity after 6 month storage Capacity after 12 month storage	91% 82% 64%
Terminal quantity	2	
Charge (constant Voltage)	Initial Charging Current less than 75 A Voltage 2.25-2.40V	
Design Life	20 Year	

Constant Current (Amp) and Constant Power (Watt) Discharge Table at 25°C (72°F)

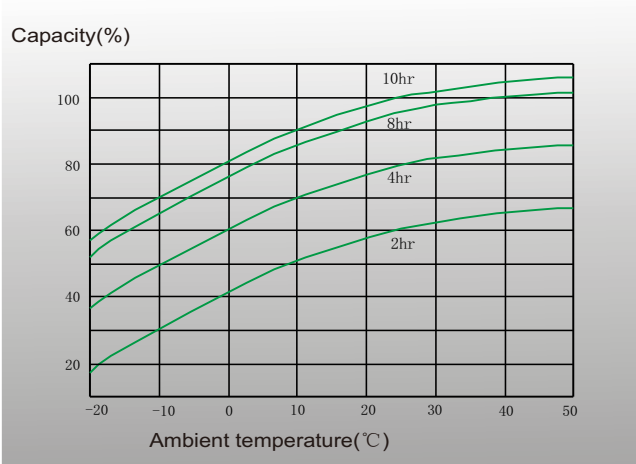
Time		30min	1hr	2hr	3hr	5hr	6hr	8hr	10hr	20hr	24hr	48hr	100hr
1.65V	A	261.0	172.5	113.0	88.5	61.0	49.4	40.0	35.0	18.1	15.0	8.0	3.9
	W	548	353	253	177	115	110	91	68	34	31	20	11
1.70V	A	253.5	165.0	106.5	83.5	57.5	46.7	38.4	33.0	17.7	14.9	8.0	3.9
	W	515	342	248	171	113	106	87	66	34	30	20	10
1.75V	A	240.0	157.5	100.5	79.5	54.5	44.4	36.7	31.5	17.1	14.9	7.9	3.9
	W	471	333	241	166	111	103	84	63	33	30	20	10
1.80V	A	231.0	150.0	95.0	75.0	51.0	42.4	35.4	30.0	16.2	14.8	7.8	3.9
	W	419	312	236	159	108	99	81	62	33	30	20	10
1.85V	A	217.5	142.5	90.5	70.5	49.0	40.4	33.3	28.4	15.3	14.1	7.7	3.9
	W	363	305	224	151	104	95	77	59	31	28	20	10



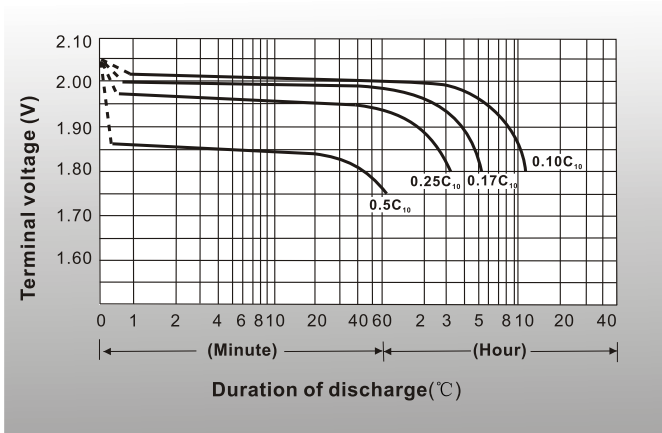
● Charging characteristics(25°C)



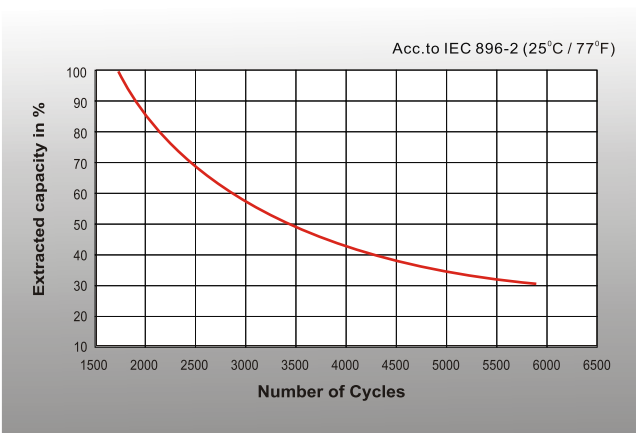
● Curves of discharge capacity and ambient temperature



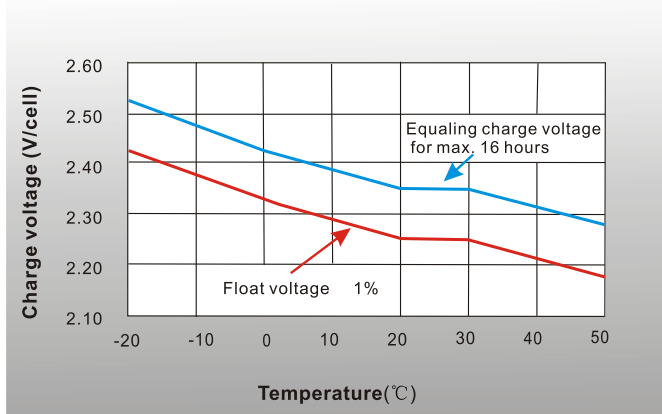
● Discharge characteristics 77° F(25°C)



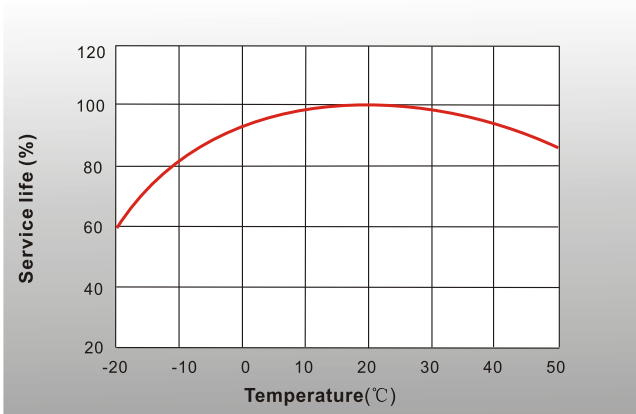
● Cycle life in relation to depth of discharge



● Charge voltage vs Ambient temperature curve



● Service life vs Ambient temperature



Shenzhen Sunnyway Battery Tech.Co.,Ltd.

Head Office: RM.A1302,NO.1 Building Tian'an Cyber Park, Longgang, Shenzhen, China
 Production Base: Nanyi Road,Dongying Economic Development Zone, Shandong, China.
 Tel:+86-755-84630145 Fax:+86-755-84630114
 Email:jerry@sunnyway-battery.com

