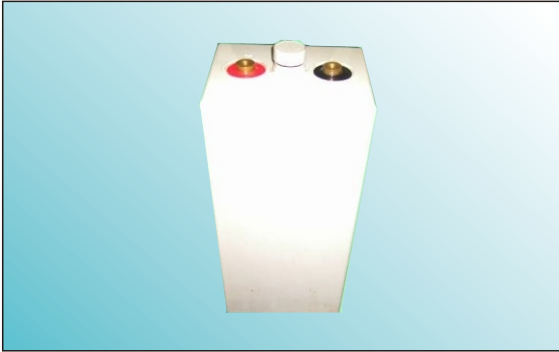
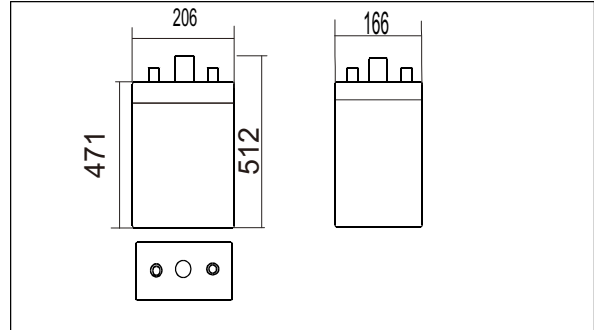




70PzV490(2V490AH)



Outer dimensions (mm)



Features

- Excellent high temperature performance;
- Excellent cycling performance;
- High strength ABS material;
- Plates: large capacity and thick plate structure design;
- Separator: glass fiber with high adsorption and high stability;

Applications

- High temperature environment(35-70°C) ;
- Telecom&UPS;
- Solar and energy systems.

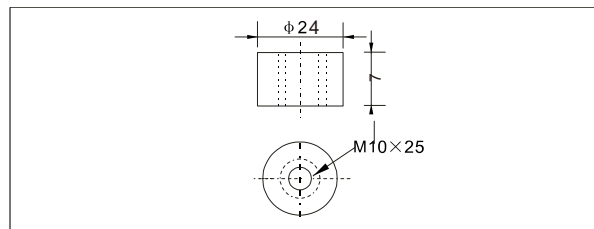
International standards

- GB/T 22473 - 2008;
- JIS C8704-1 : 2006 ;
- IEC 60896-21/22: 2004 ;
- Passed ISO9001, ISO14001,
- OHSAS18001, UL, CE, CGC.

Specifications

Nominal Voltage		2V
Rated capacity(10 hour rate)		490Ah
Dimensions	Total Height	512mm(20.2inches)
	Height	471mm(18.5inches)
	Length	166mm(6.5 inches)
	Width	206mm(8.11 inches)
Weight approx		39 kg (85.8 lbs)

Terminal Type (mm)



Characteristics

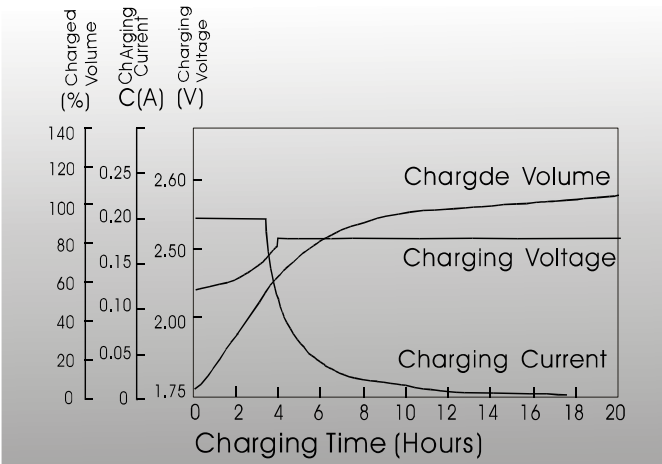
Capacity 25°C(77°F)	10 hour rate(50.0 A) 5 hour rate(89A) 1 hour rate(257.3A)	490AH 445AH 257.3AH
Internal Resistance	Full charged Battery at 25°C(77°F)	0.75 mΩ
Capacity affected by Temperature (10hour rate)	40°C(104°F) 25°C(77°F) 0°C(32°F) -15°C(5°F)	102% 100% 85% 65%
Self-Discharge at 25°C(77°F)	Capacity after 3 month storage Capacity after 6 month storage Capacity after 12 month storage	91% 82% 64%
Terminal quantity	2	
Charge (constant Voltage)	Initial Charging Current less than 123 A Voltage 2.25-2.40V	
Design Life	20 Year	

Constant Current(Amp) and Constant Power(Watt) Discharge Table at 25°C (72°F)

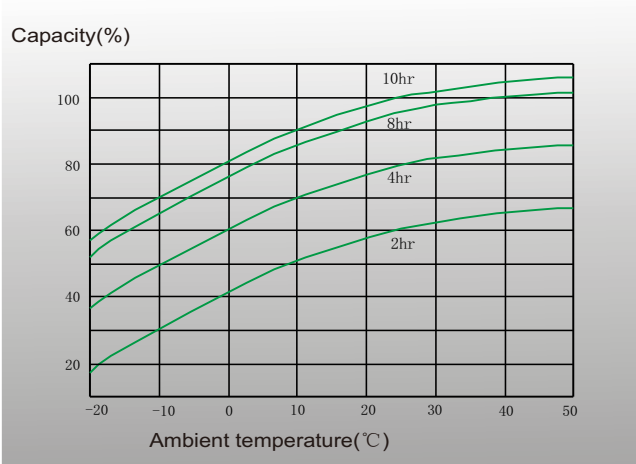
Time		30min	1hr	2hr	3hr	5hr	6hr	8hr	10hr	20hr	24hr	48hr	100hr
1.65V	A	426.3	281.8	184.6	144.6	99.6	80.6	65.3	57.2	29.5	24.4	13.1	6.4
	W	894	576	412	289	187	179	148	110	56	50	33	17
1.70V	A	414.1	269.5	174.0	136.4	93.9	76.2	62.6	53.9	28.8	24.3	13.0	6.4
	W	840	559	404	279	184	173	142	107	55	49	33	17
1.75V	A	392.0	257.3	164.2	129.9	89.0	72.4	59.9	51.5	27.9	24.3	12.8	6.4
	W	768	544	394	270	181	168	137	103	54	49	33	17
1.80V	A	377.3	245.0	155.2	122.5	83.3	69.2	57.7	49.0	26.5	24.2	12.7	6.3
	W	684	510	385	260	176	162	132	100	54	49	33	17
1.85V	A	355.3	232.8	147.8	115.2	80.0	65.9	54.4	46.3	25.0	23.0	12.7	6.3
	W	593	497	365	247	169	154	127	96	51	46	33	17



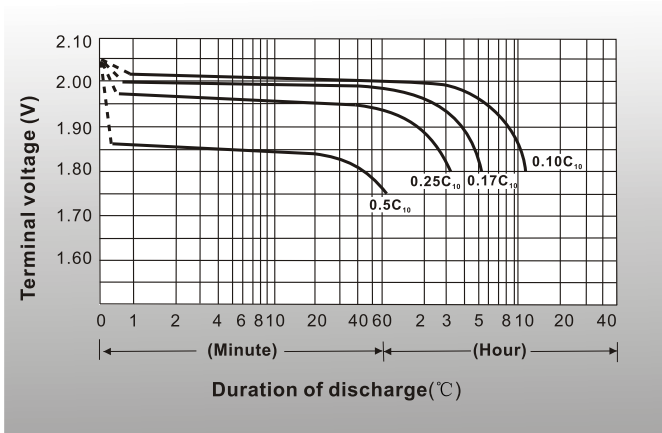
● Charging characteristics(25°C)



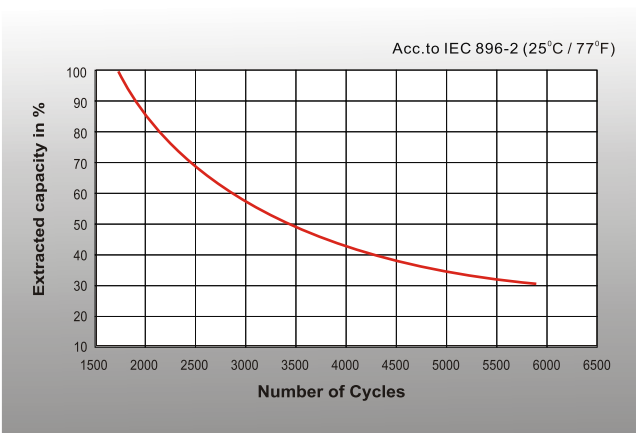
● Curves of discharge capacity and ambient temperature



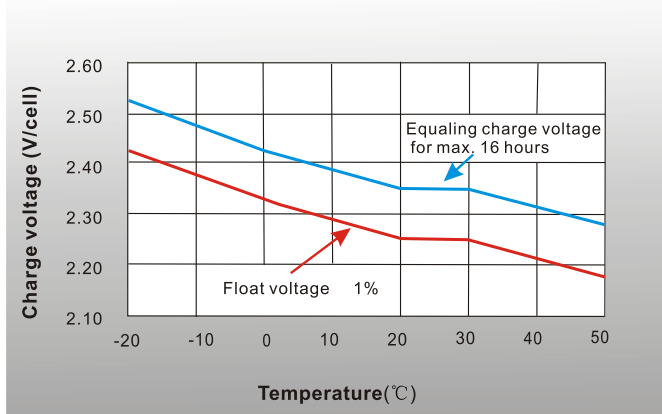
● Discharge characteristics 77° F(25°C)



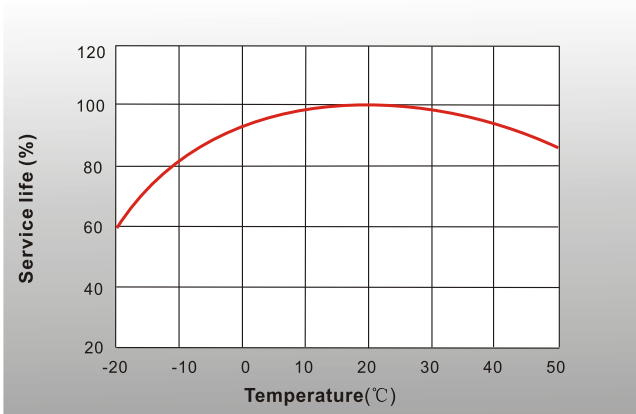
● Cycle life in relation to depth of discharge



● Charge voltage vs Ambient temperature curve



● Service life vs Ambient temperature



Shenzhen Sunnyway Battery Tech.Co.,Ltd.

Head Office: RM.A1302,NO.1 Building Tian'an Cyber Park, Longgang, Shenzhen, China
 Production Base: Nanyi Road,Dongying Economic Development Zone, Shandong, China.
 Tel:+86-755-84630145 Fax:+86-755-84630114
 Email:jerry@sunnyway-battery.com

