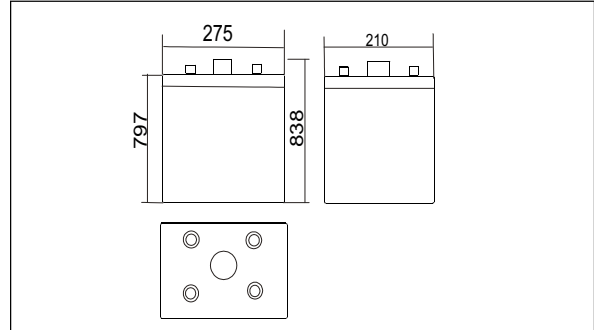




12OPzV1500(2V1500AH)



Outer dimensions (mm)



Features

- Excellent high temperature performance;
- Excellent cycling performance;
- High strength ABS material;
- Plates: large capacity and thick plate structure design;
- Separator: glass fiber with high adsorption and high stability;

Applications

- High temperature environment(35-70°C) ;
- Telecom&UPS;
- Solar and energy systems.

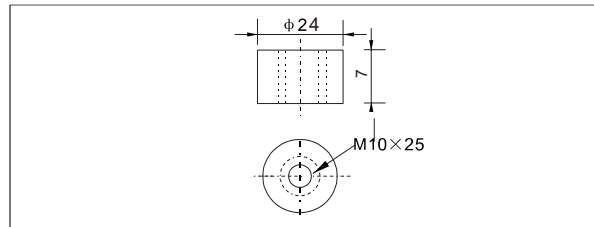
International standards

- GB/T 22473 - 2008;
- JIS C8704-1 : 2006 ;
- IEC 60896-21/22: 2004 ;
- Passed ISO9001、ISO14001、OHSAS18001、UL、CE、CGC.

Specifications

Nominal Voltage		2V
Rated capacity(10 hour rate)		1500Ah
Dimensions	Total Height	838mm(33.0 inches)
	Height	797mm(31.4 inches)
	Length	275mm(10.8 inches)
	Width	210mm(8.27 inches)
Weight approx		113 kg (248.6 lbs)

Terminal Type (mm)



Characteristics

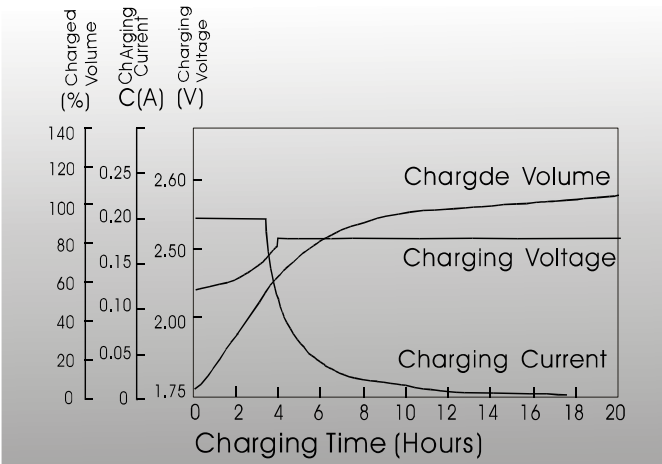
Capacity 25°C(77°F)	10 hour rate(150 A) 5 hour rate(287.5A) 1 hour rate(787.5A)	1500AH 1437.5AH 787.5AH
Internal Resistance	Full charged Battery at 25°C(77°F)	0.38mΩ
Capacity affected by Temperature (10hour rate)	40°C(104°F) 25°C(77°F) 0°C(32°F) -15°C(5°F)	102% 100% 85% 65%
Self-Discharge at 25°C(77°F)	Capacity after 3 month storage Capacity after 6 month storage Capacity after 12 month storage	91% 82% 64%
Terminal quantity	4	
Charge (constant Voltage)	Initial Charging Current less than 375 A Voltage 2.25-2.40V	
Design Life	20 Year	

Constant Current(Amp) and Constant Power(Watt) Discharge Table at 25°C (72°F)

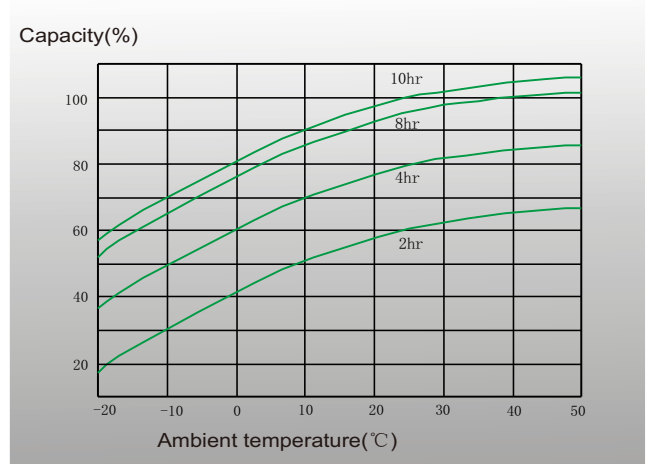
Time		30min	1hr	2hr	3hr	5hr	6hr	8hr	10hr	20hr	24hr	48hr	100hr
1.65V	A	1305.0	862.5	565.0	442.5	305.0	246.8	200.0	175.0	90.3	74.7	40.0	19.7
	W	2738	1763	1263	885	573	548	453	338	170	153	101	53
1.70V	A	1267.5	825.0	532.5	417.5	287.5	233.3	191.8	165.0	88.2	74.5	39.8	19.7
	W	2573	1710	1238	855	563	530	435	328	168	152	101	52
1.75V	A	1200.0	787.5	502.5	397.5	272.5	221.8	183.3	157.5	85.5	74.3	39.3	19.5
	W	2353	1665	1205	828	555	515	420	315	167	150	101	52
1.80V	A	1155.0	750.0	475.0	375.0	255.0	211.8	176.8	150.0	81.0	74.0	39.0	19.4
	W	2093	1560	1178	795	540	495	405	308	165	149	101	52
1.85V	A	1087.5	712.5	452.5	352.5	245.0	201.8	166.5	141.8	76.5	70.5	38.7	19.3
	W	1815	1523	1118	755	518	473	387	293	156	142	100	51



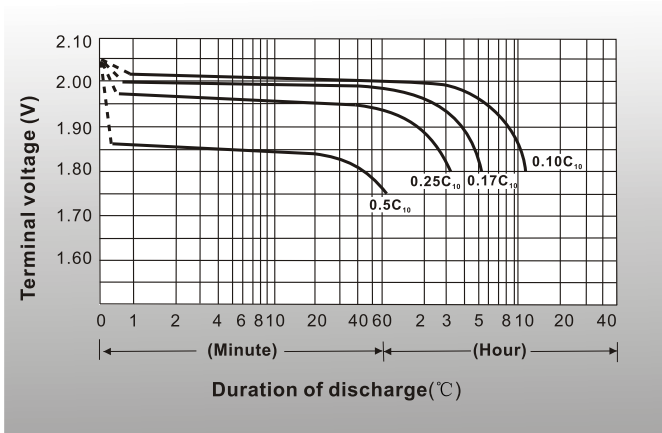
● Charging characteristics(25°C)



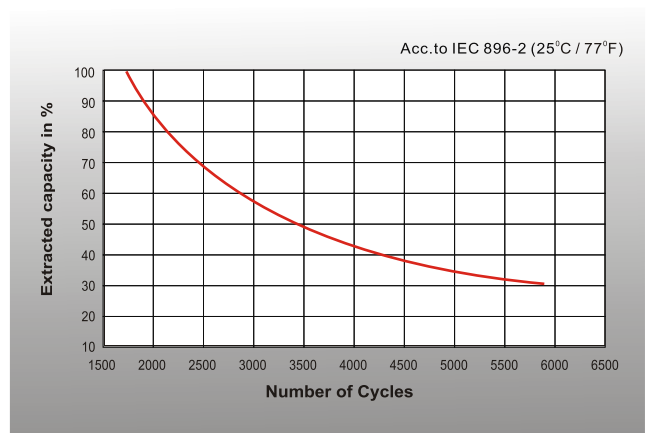
● Curves of discharge capacity and ambient temperature



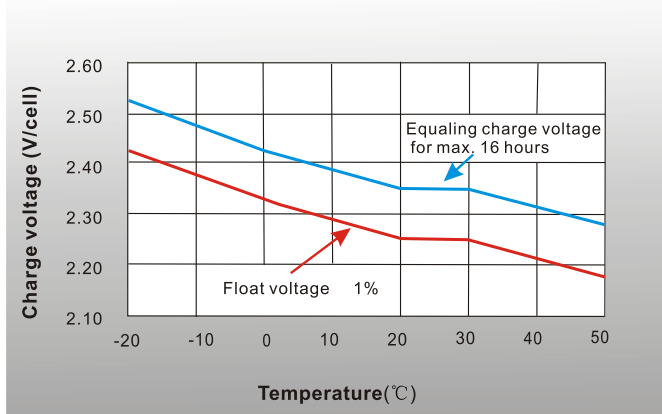
● Discharge characteristics 77° F(25°C)



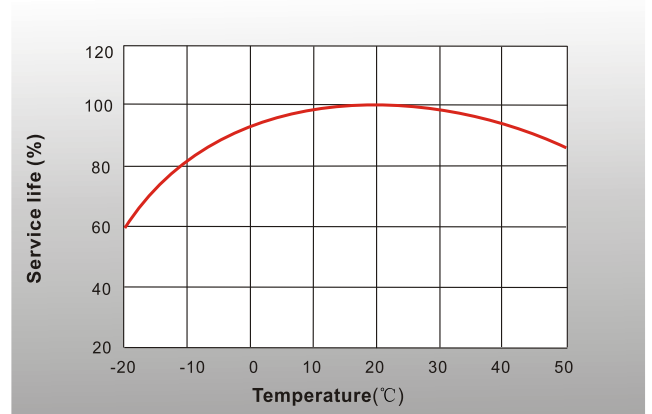
● Cycle life in relation to depth of discharge



● Charge voltage vs Ambient temperature curve



● Service life vs Ambient temperature



Shenzhen Sunnyway Battery Tech.Co.,Ltd.

Head Office: RM.A1302,NO.1 Building Tian'an Cyber Park, Longgang, Shenzhen, China
 Production Base: Nanyi Road,Dongying Economic Development Zone, Shandong, China.
 Tel:+86-755-84630145 Fax:+86-755-84630114
 Email:jerry@sunnyway-battery.com

