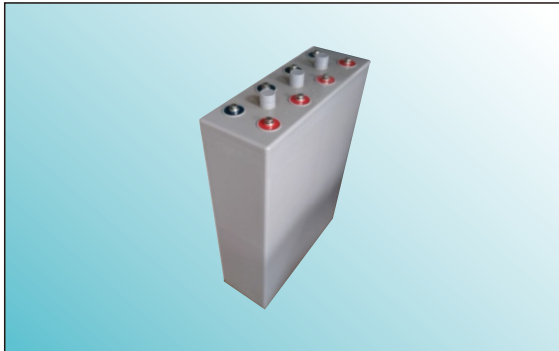




24OPzV3000(2V3000AH)



● Features

- Excellent high temperature performance;
- Excellent cycling performance;
- High strength ABS material;
- Plates: large capacity and thick plate structure design;
- Separator: glass fiber with high adsorption and high stability;

● Applications

- High temperature environment(35-70°C) ;
- Telecom&UPS;
- Solar and energy systems.

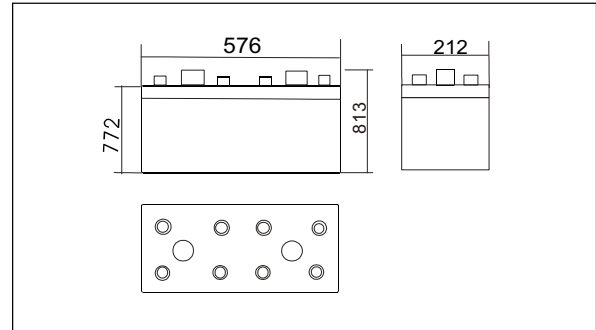
● International standards

- GB/T 22473 - 2008;
- JIS C8704-1 : 2006 ;
- IEC 60896-21/22: 2004 ;
- Passed ISO9001、ISO14001、
- OHSAS18001、UL、CE、CGC.

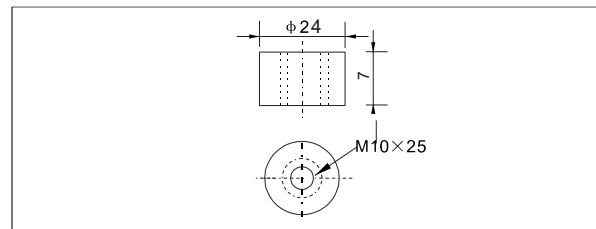
● Specifications

Nominal Voltage		2V
Rated capacity(10 hour rate)		3000Ah
Dimensions	Total Height	813mm(31.9 inches)
	Height	772mm(30.4 inches)
	Length	576mm(22.6 inches)
	Width	212mm(8.35 inches)
Weight approx		238 kg(523.6 lbs)

● Outer dimensions (mm)



● Terminal Type (mm)



● Characteristics

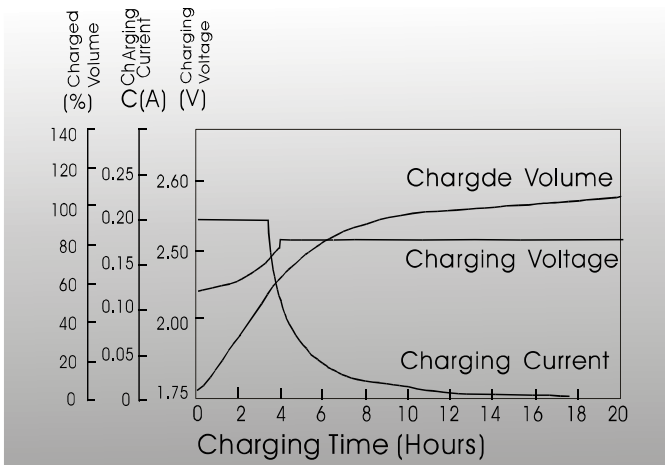
Capacity 25°C(77°F)	10 hour rate(300 A) 5 hour rate(545A) 1 hour rate(1575A)	3000AH 2725AH 1575AH
Internal Resistance	Full charged Battery at 25°C(77°F)	0.38mΩ
Capacity affected by Temperature (10hour rate)	40°C(104°F) 25°C(77°F) 0°C(32°F) -15°C(5°F)	102% 100% 85% 65%
Self-Discharge at 25°C(77°F)	Capacity after 3 month storage Capacity after 6 month storage Capacity after 12 month storage	91% 82% 64%
Terminal quantity	2	
Charge (constant Voltage)	Initial Charging Current less than 500 A Voltage 2.25-2.40V	
Design Life	20 Year	

Constant Current(Amp) and Constant Power(Watt) Discharge Table at 25°C (72°F)

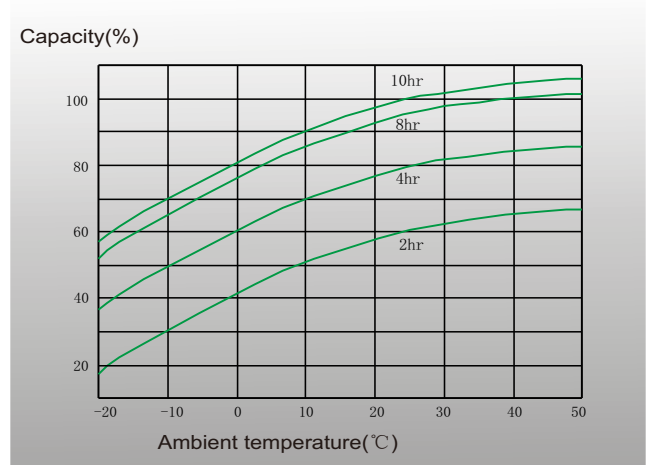
Time		30min	1hr	2hr	3hr	5hr	6hr	8hr	10hr	20hr	24hr	48hr	100hr
1.65V	A	2610.0	1725.0	1130.0	885.0	610.0	493.5	400.0	350.0	180.5	149.5	80.0	39.4
	W	5475	3525	2525	1770	1145	1095	905	675	340	306	203	105
1.70V	A	2535.0	1650.0	1065.0	835.0	575.0	466.5	383.5	330.0	176.5	149.0	79.5	39.4
	W	5145	3420	2475	1710	1125	1060	870	655	337	303	202	105
1.75V	A	2400.0	1575.0	1005.0	795.0	545.0	443.5	366.5	315.0	171.0	148.5	78.5	39.0
	W	4705	3330	2410	1655	1110	1030	840	630	333	300	202	104
1.80V	A	2310.0	1500.0	950.0	750.0	510.0	423.5	353.5	300.0	162.0	148.0	78.0	38.8
	W	4185	3120	2355	1590	1080	990	810	615	330	297	201	104
1.85V	A	2175.0	1425.0	905.0	705.0	490.0	403.5	333.0	283.5	153.0	141.0	77.5	38.7
	W	3630	3045	2235	1510	1035	945	775	585	312	284	201	103



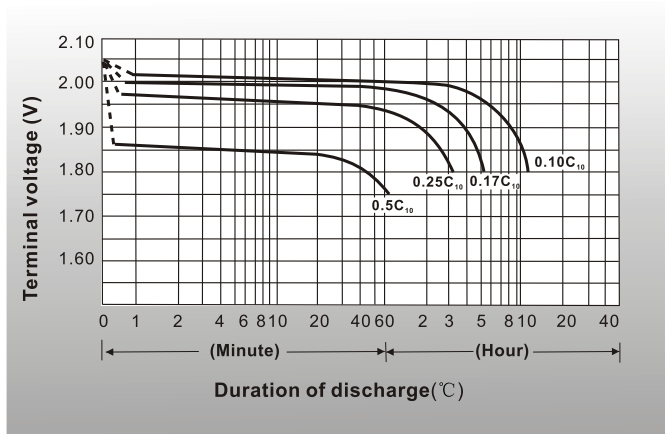
● Charging characteristics(25°C)



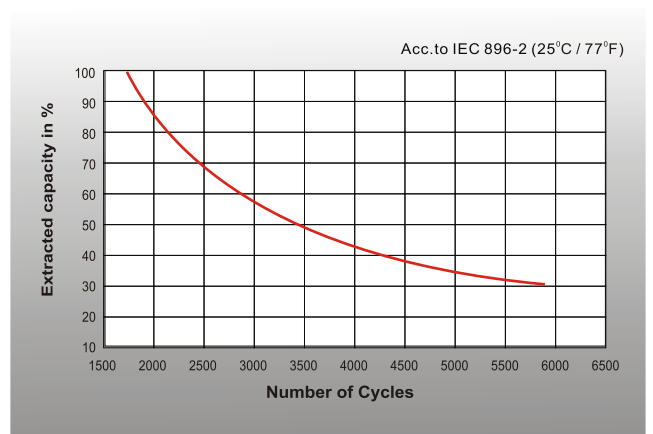
● Curves of discharge capacity and ambient temperature



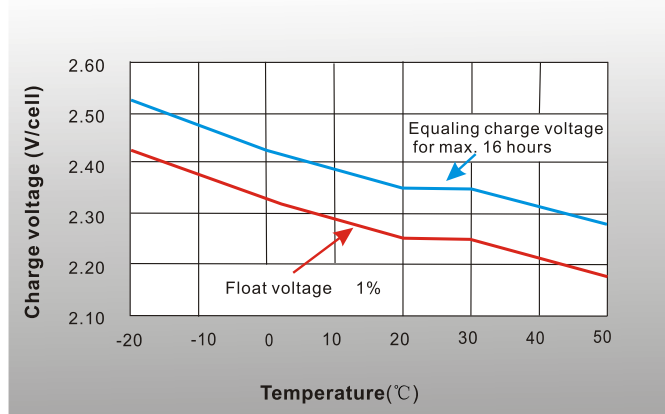
● Discharge characteristics 77° F(25°C)



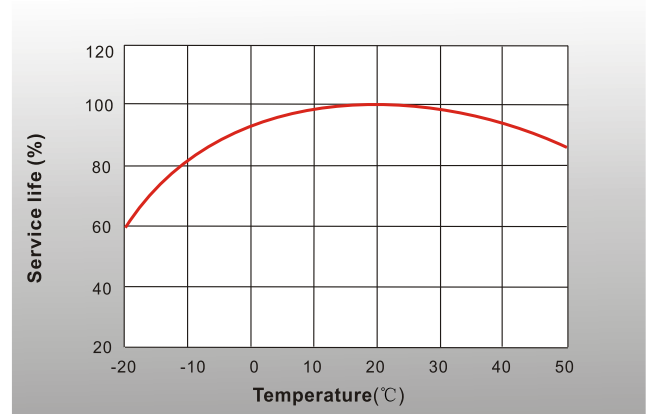
● Cycle life in relation to depth of discharge



● Charge voltage vs Ambient temperature curve



● Service life vs Ambient temperature



Shenzhen Sunnyway Battery Tech.Co.,Ltd.

Head Office: RM.A1302,NO.1 Building Tian'an Cyber Park, Longgang, Shenzhen, China
 Production Base: Nanyi Road,Dongying Economic Development Zone, Shandong, China.
 Tel:+86-755-84630145 Fax:+86-755-84630114
 Email:jerry@sunnyway-battery.com

